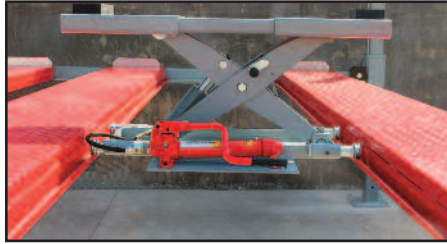
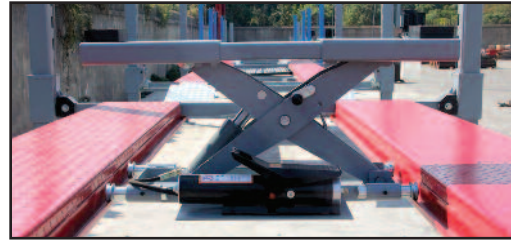


## Check out some of our most popular lift accessory items:



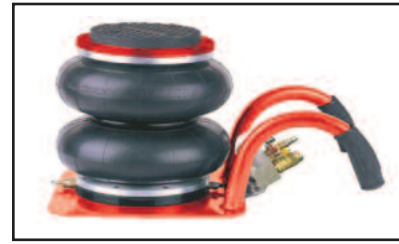
### RJ-M Rolling Hydraulic Jack Manual

Rolling hydraulic scissor jack hand pump, this jack spreads out to 44" and raises 18". It comes with high-density lift blocks for axle placement to create a solid lifting point and keeps from scratching the bottom of the vehicles. This is a perfect jack when doing wheel and tire maintenance, it gives you that secure feeling that everything is rock solid. It also fits most four-post lifts with vertical tracks. CAPACITY 4,500 lbs.



### RJ-A Rolling Air/Hydraulic Jack

Rolling air / hydraulic scissor jack, this jack spreads out to 44" and raises 18". It comes with high-density lift blocks for axle placement to create a solid lifting point and keeps from scratching the bottom of the vehicles. This is a perfect jack when doing wheel and tire maintenance, it gives you that secure feeling that everything is rock solid. It also fits most four-post lifts with vertical tracks. CAPACITY 4,500 lbs.



### ABJ-2 Air Bag Jack

Portable, inflatable air jack are ideal for doing wheel and suspension work either at the shop or on the road. Low profile bag jack when put into our jacking tray it is perfect for low clearance cars like Corvettes. Built-in internal telescoping steel rods provide extra strength and a pressure release valve prevent damage from over-inflation.

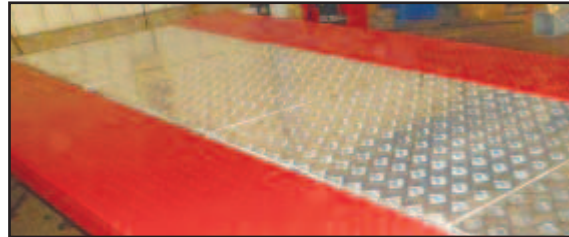
CAPACITY 4,000 lbs.  
MIN HEIGHT 4"  
EXTENDED HT. 11.6"  
AIR PRESSURE 100-120 PSI



### LL-170 Lift Lights

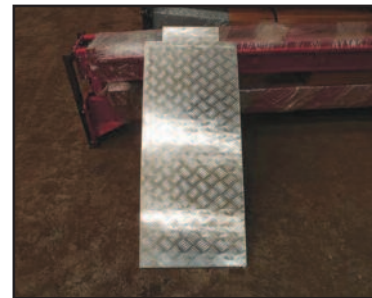
These are extremely bright LED lights that give you full illuminations with no shadows. They are easy to install just take a couple of minutes. They come with magnetic buttons that just stick to the lift they are inserted into a plastic tube for protection against shock and vibration. Comes with a 110 volt transformer. *No more burning the back of your hand on the drop light.*

— Fits all 4 post lifts —



### AD-40 Aluminum Deck Inserts

These light weight aluminum decks inserts (36" x 40") transform your lift into a full deck lifting system providing additional square footage for storing motorcycles, ATV's or other garage clutter. Lightweight aluminum construction makes removal and installation a cinch so you can gain hassle-free access to the vehicle underside whenever you need to. They also prevent fluids from dripping below the lift deck so you can relax knowing that bottom vehicles, equipment and flooring are protected from nasty spills. An attractive diamond-plate finish provides a sure-footed non-slip surface. To cover the SS-9000 it would take 4 units with a total price of \$799 (4 inserts x \$199 each).



### AR-48 Aluminum Approach Ramps 48"

Light weight 48" aluminum approach ramps

*View our complete line of lifts and accessory products for all your garage needs at our website!*



Place your order today!

Visit the website: [www.AdvantageLifts.ca](http://www.AdvantageLifts.ca)



**Kyle Devereaux**

Email: [Kyle@AdvantageLifts.ca](mailto:Kyle@AdvantageLifts.ca)

Phone: 403-896-7258

**Contact Us Today!**

**ADVANTAGE LIFTS, LLC.**

#50 Denmark Crescent  
Red Deer, Alberta  
Canada T4R2K4



[www.AdvantageLifts.ca](http://www.AdvantageLifts.ca)

## Your Garage Solution!

The SS-9000 & 11000 lifts are made exclusively for Advantage Lifts. This is not your run of the mill stamped out imported lift that you see everywhere for sale. Over 15 years of experience of selling, installing, designing and building lifts has gone into the design of these lifts. Each lift is built to our spec's which gives you, the customer, a superior design and a high quality product to meet your needs. The lift that will last for years carrying a **5 YEAR LIMITED WARRANTY!**



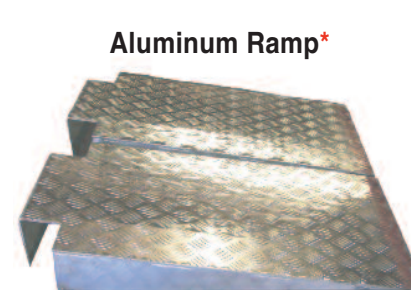
### 4 Post Lift SS 9000 HD

**All 4-Post Lift Bundles Include the (4) Accessories Shown Below\***

**LIMITED TIME ONLY – CALL TODAY!**



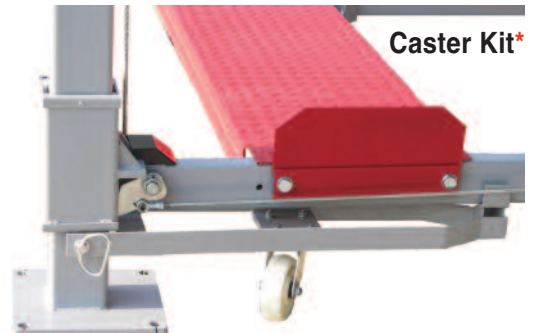
Drip Trays\*



Aluminum Ramp\*



Rolling Jack Tray\*



Caster Kit\*

Advantage Lifts Model:	SS 9000 HD	SS 9000 XLT	SS 11000 HD
LIFT DIMENSIONS/SPECS:	Specs 9,000 lb.	Specs 9,000 lb.	Specs 11,000 lb.
Overall Height of Corner Posts	93" - 7' 9"	105" - 8' 9"	105" - 8' 9"
Max Height to Top of Track on Lock	75.5" - 6' 4"	87.5" - 7' 3"	87.5" - 7' 3"
Max Clearance Under Deck on Lock	71" - 5' 11"	83" - 6' 11"	83" - 6' 11"
Size of Column / Base Plate	5" x 5" - 12" x 12"	5" x 5" - 12" x 12"	5" x 5" - 12" x 12"
Track Length	170" - 14' 2"	192" - 16'	203" - 16' 11"
Track Thickness	4.5"	4.5"	4.5"
Track Width	18.75"	18.75"	24"
Floor Space Footprint	L 182" x W 113"	L 203" - W 119"	L 215" - W 123"
Overall Width Outside Post	108"	114"	118" - 9' 10"
Overall Length	182" - 15'	203" - 16' 11"	17' 9" - 246" - 20' 6"
Outside Width Track to Track	75"	75"	87" - 7' 3"
Width Between Tracks / Rails	37.5" - 34.75"	37.5" - 34.75"	39" - 36"
Between the Post Width	98"	104"	108" - 9'
Power Electric/Hydraulic	120 Volt 20 Amp	120 Volt 20 Amp	240 Volt 20 Amp
Shipping Weight	1,880 lbs.	2,150 lbs.	2,850 lbs.



**SS 11000 HD**

Visit the website: [AdvantageLifts.ca](http://AdvantageLifts.ca)



View installation video with other photos and descriptions of our full product line!



## Side x Side

Advantage Lifts Model:	Side x Side
LIFT DIMENSIONS/SPECS:	Specs 10,000 lb.
Over all height of corner posts	105" - 8' 9"
Max Height to top of track on lock	87.5" - 7' 3"
Max Clearance under deck on lock	83" - 6' 11"
Size of column / Base plate	5" X 5" - 12" X 12"
Track length	192" - 16'
Track thickness	4.5"
Track width	18.75"
Floor Space Footprint	L 203" X W 207"
Overall width outside post	202"
Overall length / with 48" app. ramps	203" - 246"
Outside width track to track	75"
Width between Tracks / Rails	37.5" - 34.75"
Between the post width	192"
Power Electric/Hydraulic	220 Volt 20 Amp
Shipping weight	4,400 lbs.

**Side x Side.** The all new Side x Side is a great option for doubling the space of your two-car garage. A span of 16' between the posts gives you ample space to drive two vehicles under your hotrods. With the optional decks it can turn your lift into a mezzanine to store the garage clutter or most anything else. The Side x Side was designed to hold 10,000 lbs. (two 5,000 lb. cars side x side). The cross arms have been pre-arched and re-enforced to prevent sagging.

## Advantages of Buying Our 4 Post Lifts:

- Outside Slider Design. 5X5 posts with 6X6 sliders are the biggest and sturdiest in the industry.
- Starts with a good base our 12x12x5/8 thick baseplates gives you a very solid base.
- 12 locking positions\*
- Top caps are 5/8" thick vs. 1/2".
- Pulley axles are 1" dia. vs. 3/4".
- Pulleys axles have set collars and lock snap rings to keep it all together.
- Locks are made out of 3/4" thick plate steel.
- Locks are cut out of our structural steel tubing vs. tabs welded on the post.
- Steel slider captures the lock giving you a safe lift to work under.
- Cross arms are 2X4X1/4" thick with no extra holes to weaken cross arm.
- We have cable keepers that hold the cable to the pulleys.
- Cables are pre-run makes for easy installation.
- 36" Aluminum approach ramps are gusseted.
- Rolling Jacking Bridge vs. sliding.
- 71" - 83" clearance under lift on top lock.
- Power unit that mounts on the post in two different positions
- Caster wheels are heavy-duty poly, will not mar your painted floors.
- 98" - 104" - 108" drive through between the posts.
- Powder coat finish.
- Hardware bolts are 3/4" vs. 1/2"
- Tracks are boxed in for extra strength.

### \*Locking positions 1-12:

This is clearance under SS 9000 HD while setting on the top lock.

15", 20", 25", 30", 35", 40",  
45", 50", 55", 60", 65", 71"

## Formula for Double Stacking

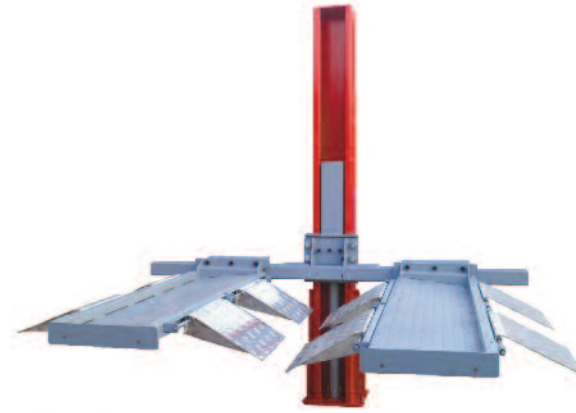
The measurements provided are for sample use only. Car height will vary.



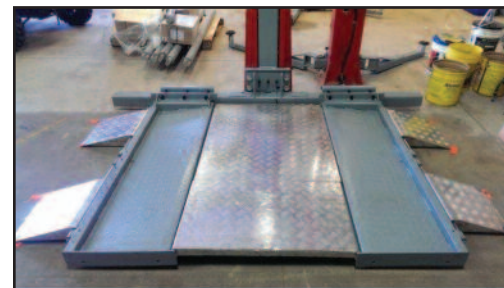
Height of Car	A	50"
Plus	+	
Height of Car	B	50"
Plus	+	
Ramp Thickness		4.5"
Plus	+	
Clearance (4" Minimum)		4"
<b>Ceiling Height Required</b>		<b>108.5"</b>



## Multi-Lift



Our Multi-Lift single post is a great lift for picking up ATV's, UTV 's, lawn mowers, golf carts, and just about any small utility vehicle. The single post take up less room in your garage and runs on a 110V power unit. It has adjustable arms to fit a variety of vehicles, it has a removable center deck and a capacity of 2,000 lbs. It does need to be anchored to the floor. It stands 9' 4" high, 8' 7" wide, 7' deep, with a max lifting height of 72".



## 2 Post Lift



**2 Post Lift.** Looking for a lift to do your brake and tire work? Or remove the body from the frame? We have the lift for you. Two post lifts are seen in almost every service shop across the country. We have two different types to choose from. The Clear Floor with columns 11' 11" tall or the Floor Plate with columns 9' 6" tall with capacities from 9000 lbs. to 11,000 lbs. Adding one of these lifts to your shop or garage will make it much easier to work on your vehicle.

2 Post Models:	AL-10-AC	AL-10-F
Type	Asymmetric Clear Floor	Asymmetric Floor Plate
Capacity	10,000 lbs.	10,000 lbs.
Pad Height	4"	4.5"
Lifting Height with Adapters	73" - 78"	69" - 75.5"
Overall height	143"	114"
Overall Width	135"	135"
Drive Through	100"	100"
Power Unit	220 Volt	220 Volt

**All 2 Post Lifts come with 220v power unit and truck adapters.**